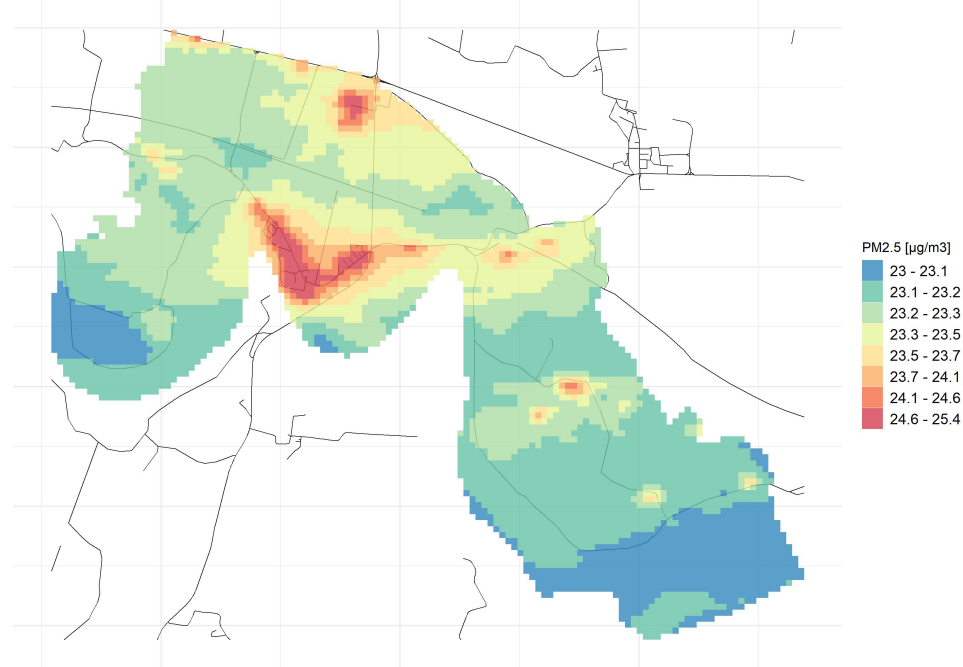


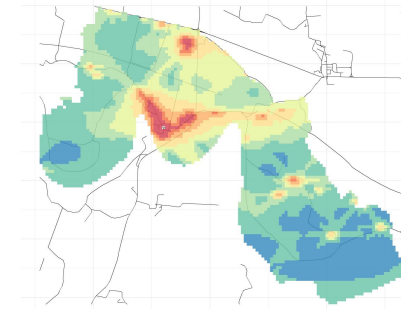
Comune di Crotta d'Adda

Concentrazioni di PM2.5 - Anno 2019

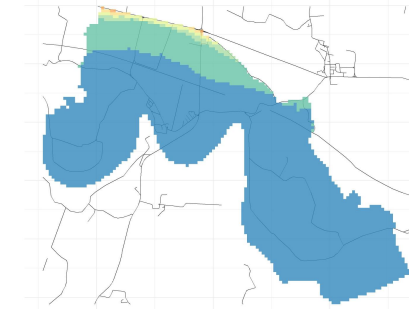
Conc. media annua PM2.5



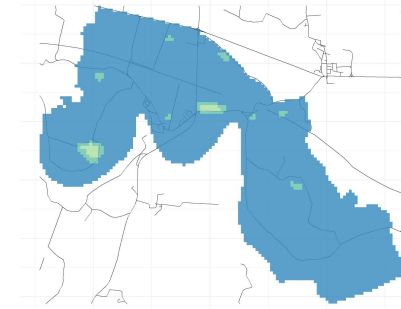
Conc. media annua - Settore: Residenziale



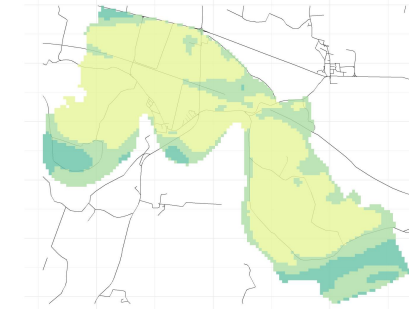
Conc. media annua - Settore: Trasporti



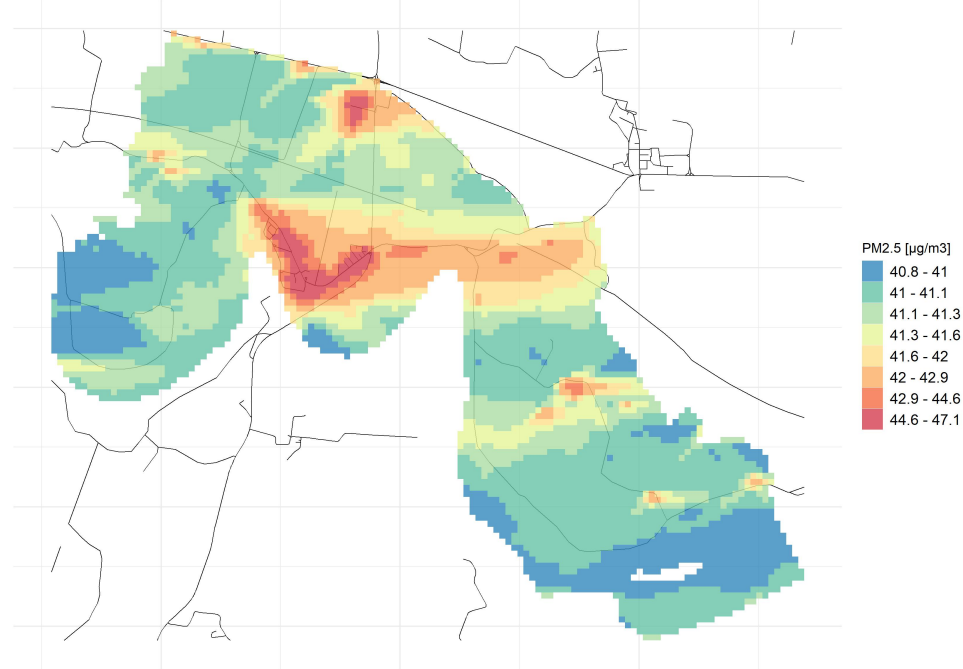
Conc. media annua - Settore: Industriale



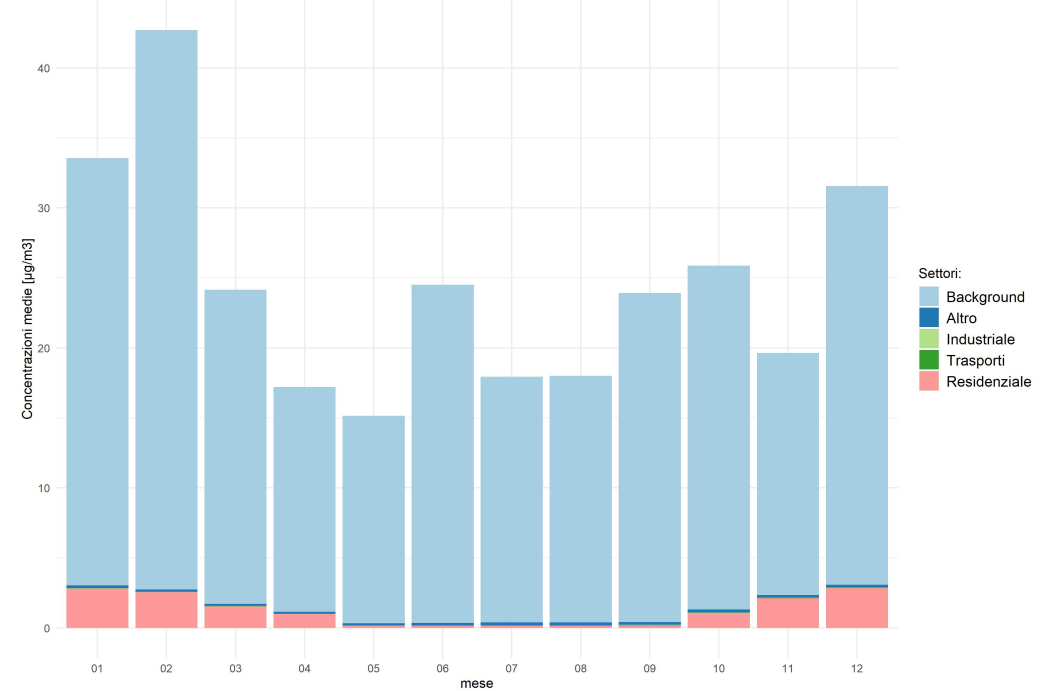
Conc. media annua - Settore: Altro



90.4° percentile della conc. media giornaliera di PM2.5



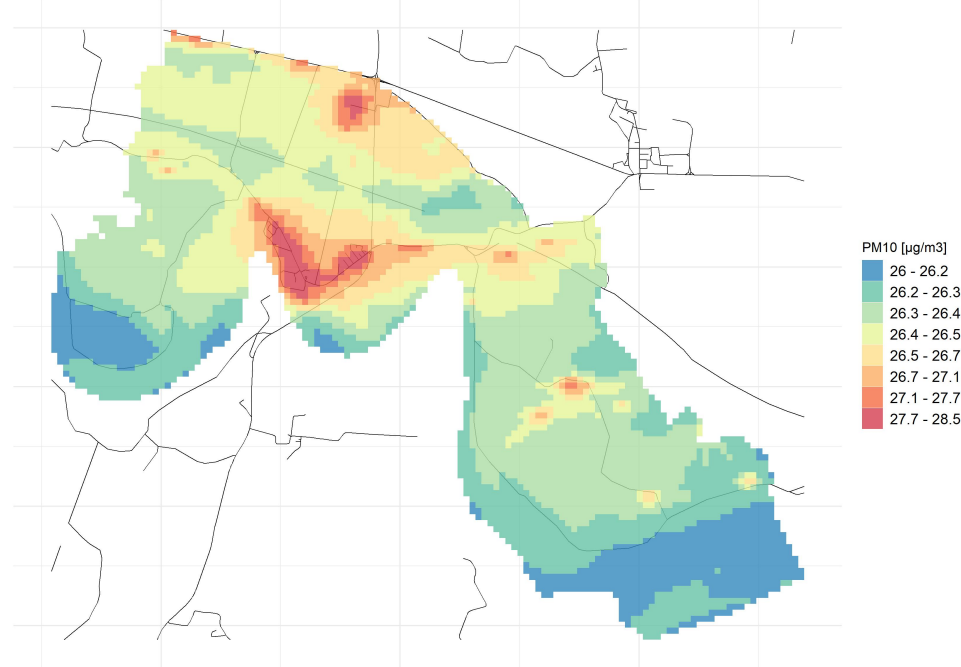
Concentrazione media centro abitato



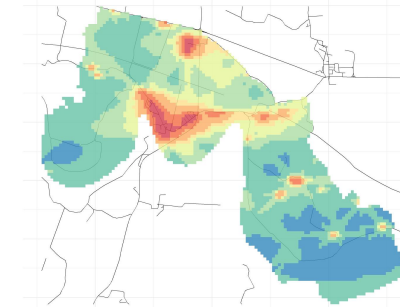
Comune di Crotta d'Adda

Concentrazioni di PM10 - Anno 2019

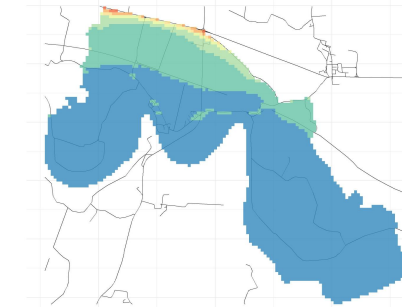
Conc. media annua PM10



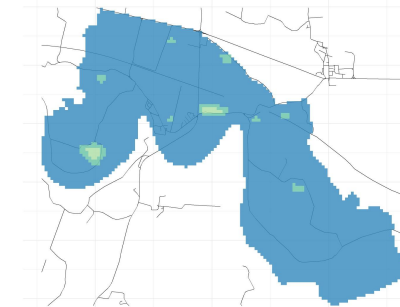
Conc. media annua - Settore: Residenziale



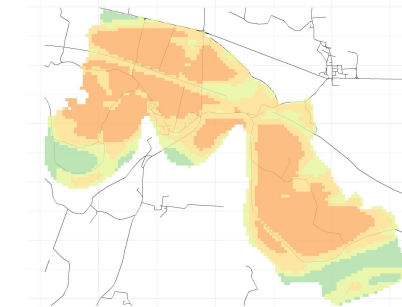
Conc. media annua - Settore: Trasporti



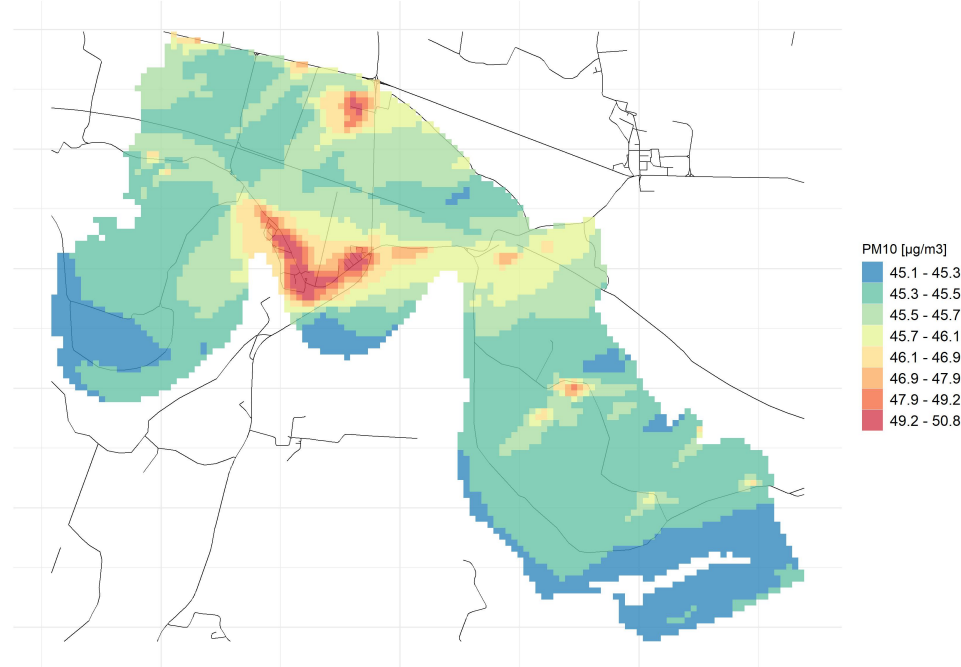
Conc. media annua - Settore: Industriale



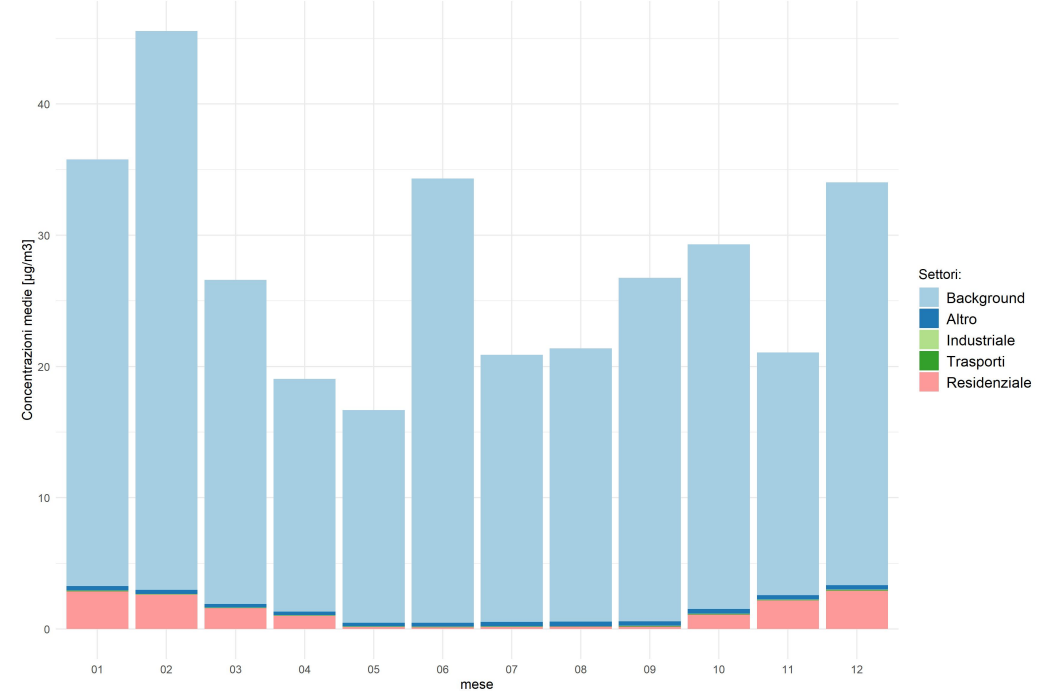
Conc. media annua - Settore: Altro



90.4° percentile della conc. media giornaliera di PM10



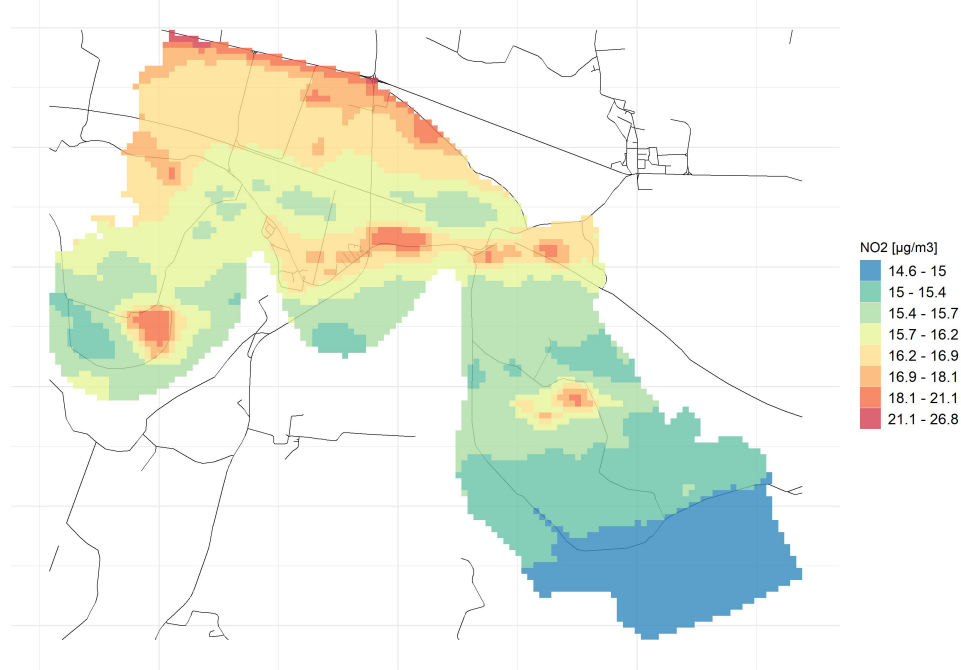
Concentrazione media centro abitato



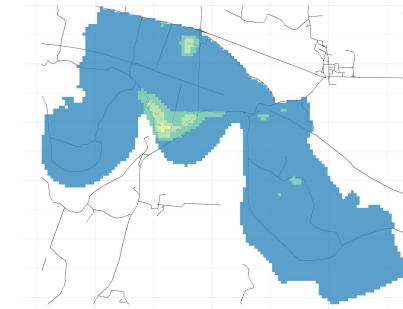
Comune di Crotta d'Adda

Concentrazioni di NO2 - Anno 2019

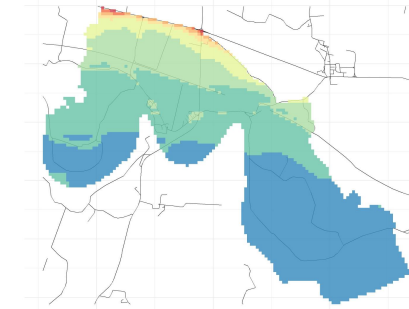
Conc. media annua NO2



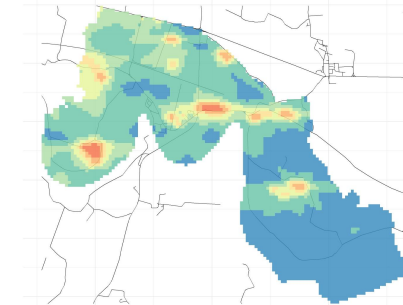
Conc. media annua - Settore: Residenziale



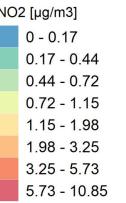
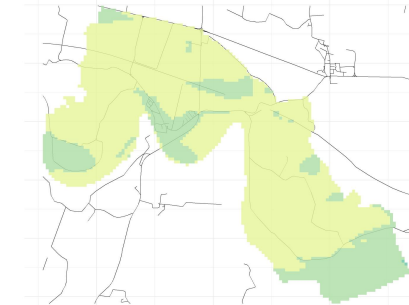
Conc. media annua - Settore: Trasporti



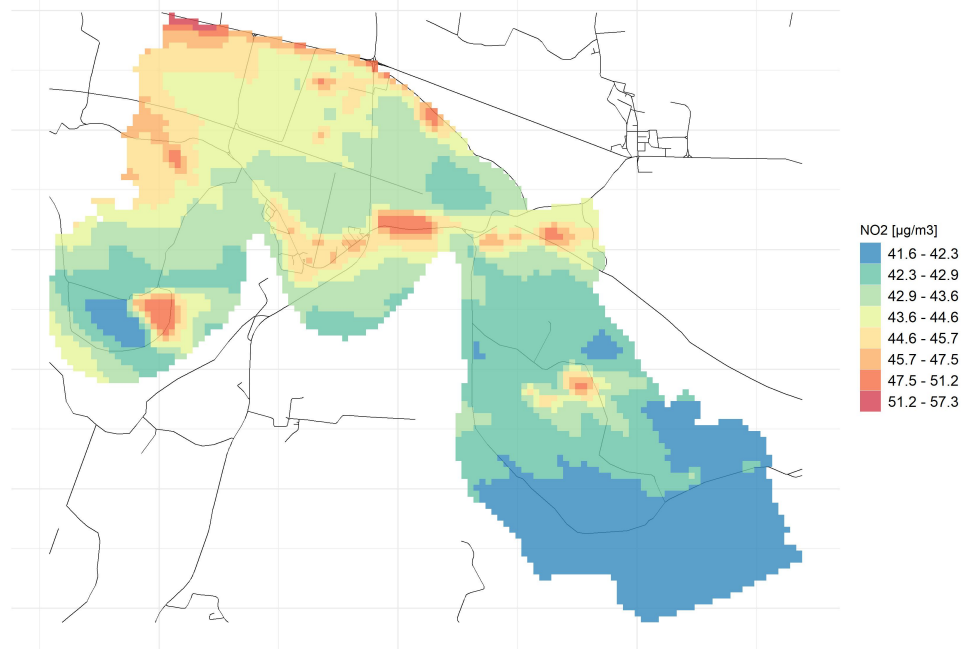
Conc. media annua - Settore: Industriale



Conc. media annua - Settore: Altro



Massima concentrazione giornaliera di NO2



Concentrazione media centro abitato

