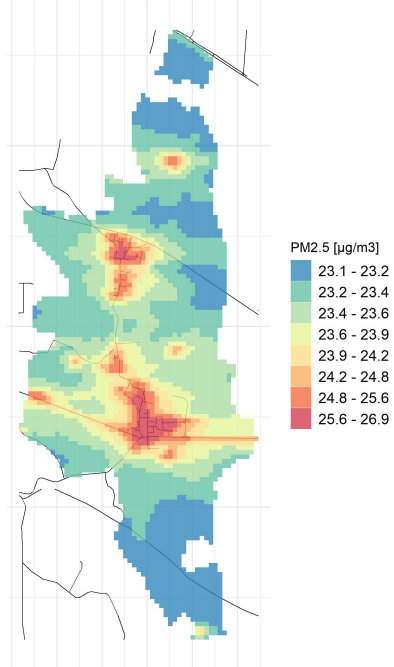


Comune di Acquanegra Cremonese

Concentrazioni di PM2.5 - Anno 2019

Conc. media annua PM2.5



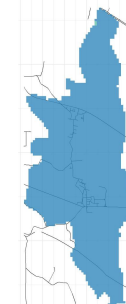
Conc. media annua - Settore: Res



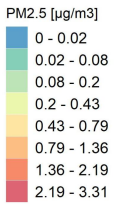
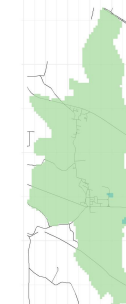
Conc. media annua - Settore: Tra:



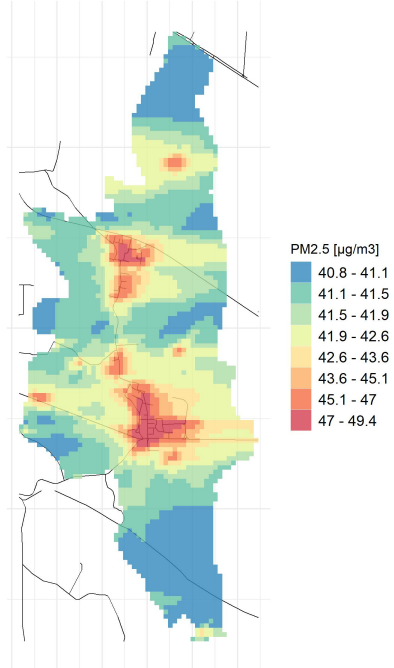
Conc. media annua - Settore: Indu



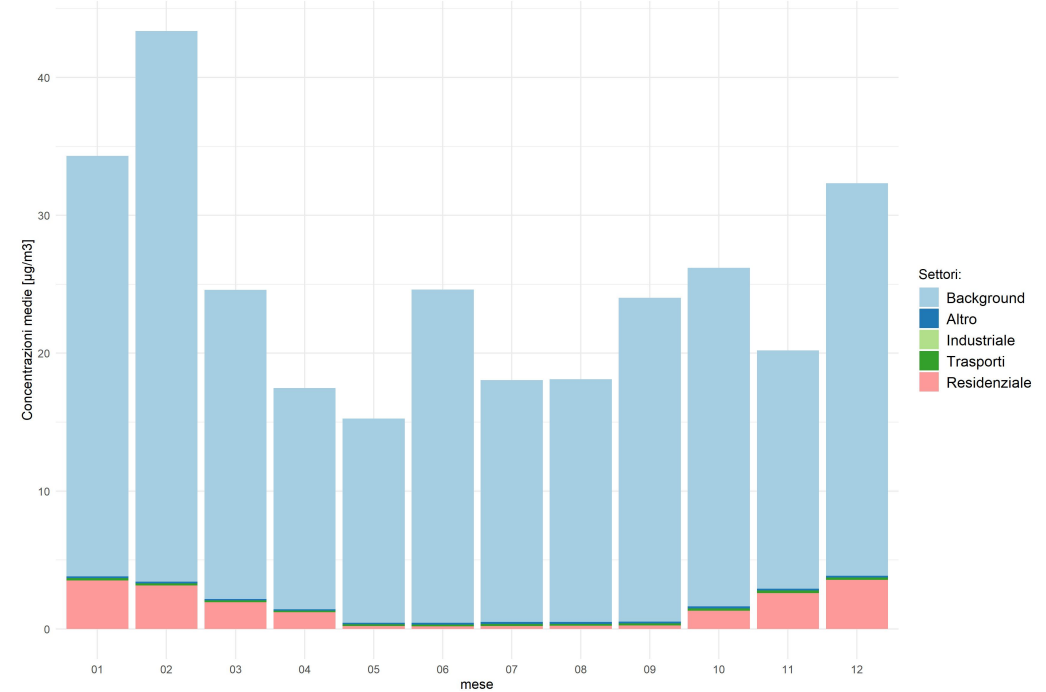
Conc. media annua - Settore: Altri



90.4° percentile della conc. media giornaliera di PM2.5



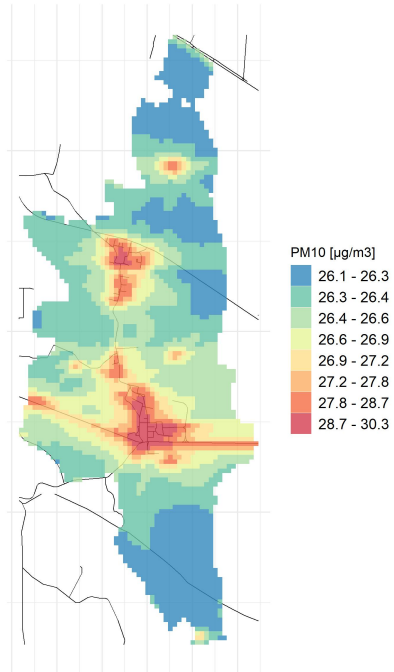
Concentrazione media centro abitato



Comune di Acquanegra Cremonese

Concentrazioni di PM10 - Anno 2019

Conc. media annua PM10



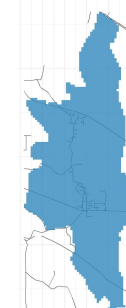
Conc. media annua - Settore: Res



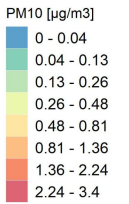
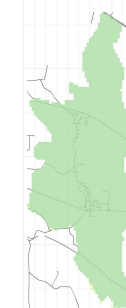
Conc. media annua - Settore: Tra:



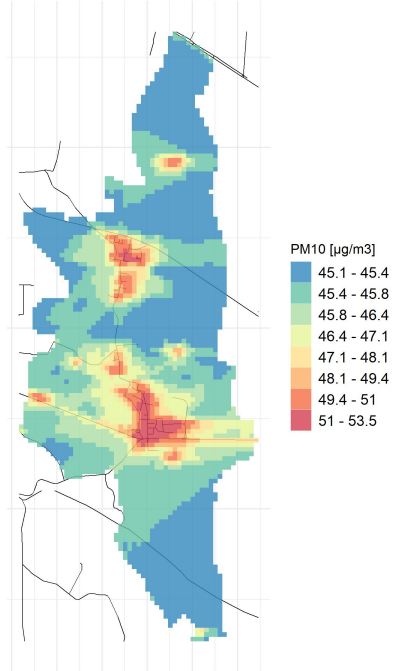
Conc. media annua - Settore: Indu



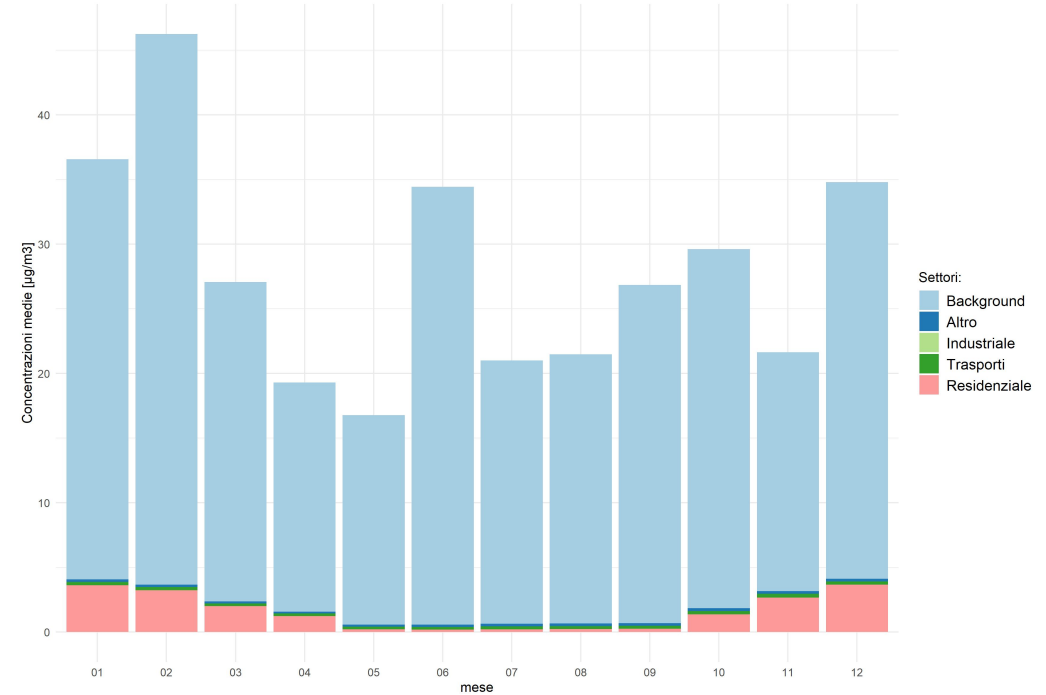
Conc. media annua - Settore: Altri



90.4° percentile della conc. media giornaliera di PM10



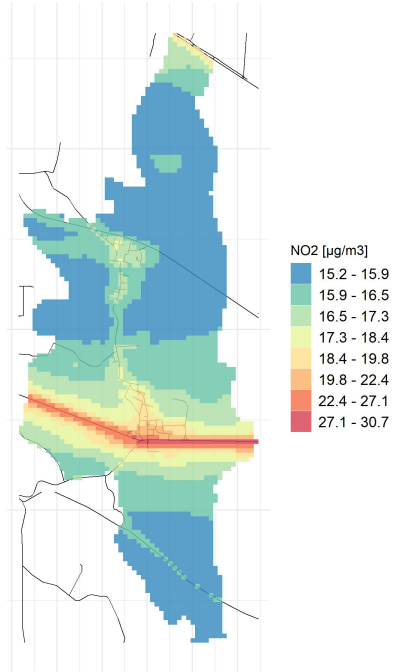
Concentrazione media centro abitato



Comune di Acquanegra Cremonese

Concentrazioni di NO2 - Anno 2019

Conc. media annua NO2



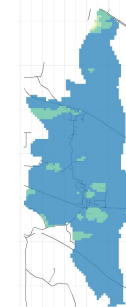
Conc. media annua - Settore: Res



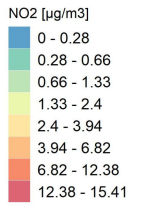
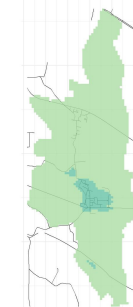
Conc. media annua - Settore: Tra:



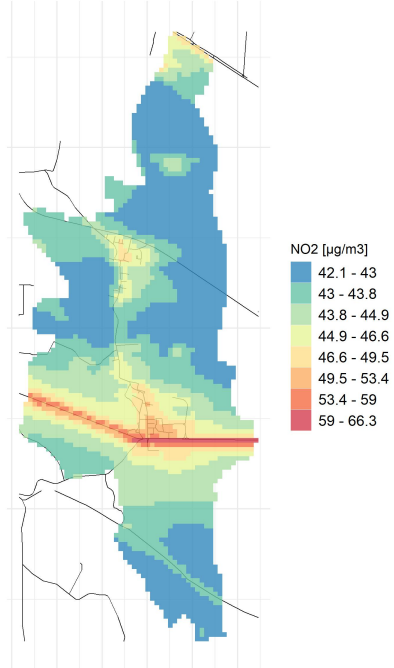
Conc. media annua - Settore: Indu



Conc. media annua - Settore: Altri



Massima concentrazione giornaliera di NO2



Concentrazione media centro abitato

